

Electromyography (EMG) Services

Electromyography (EMG) is a diagnostic procedure to assess the health of nerves and muscles. This test is used to help explain the cause of acute, subacute or chronic neuromuscular symptoms by identifying areas of nerve or muscle injury.

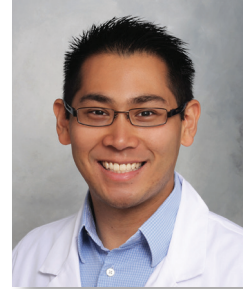
There are two parts to EMG testing: a nerve conduction study and a needle exam for muscle testing. Both parts are necessary for a detailed evaluation and diagnosis. The Nerve Conduction Study (NCS) portion allows non-invasive analysis of nerve physiology and function. The EMG portion uses a small needle electrode inserted directly into a muscle to record the electrical activity in that muscle.

EMG testing can be considered for patients who complain of:

- Sensory abnormalities such as numbness, tingling, pins and needles, burning or pain in the limbs
- Radicular type pain from the neck or back
- Facial numbness or weakness
- Muscle weakness or atrophy

EMG testing can help to precisely diagnose:

- Carpel tunnel syndrome, ulnar neuropathy, radial neuropathy, sciatic neuropathy and other nerve injuries in the limbs
- Diabetic neuropathy and other causes of generalized peripheral neuropathy
- Radiculopathy in the cervical, thoracic and lumbosacral regions
- Brachial and lumbosacral plexopathy
- Trigeminal neuralgia, Bell's palsy, or other facial nerve and muscle injury
- Myopathic disease processes
- Neuromuscular junction disorders such as myasthenia gravis



Michael Lui, M.D.

Dr. Lui joined Pali Momi Medical Center in 2012. He specializes in Neurology and has advanced fellowship training in EMG, neuromuscular medicine and myasthenia gravis. Dr. Lui is board certified in both Neurology and Electrodiagnostic Medicine.

To make an appointment with Dr. Lui, please call **808-485-4250**. Most EMG and consultation requests can be scheduled on the same day for your patient's convenience. Our EMG lab is located at the Pali Momi Medical Pavilion on the ground level in Suite 1. Our Neurology Clinic is located in the Medical Office Building at Pali Momi Medical Center in Suite 640.