



Established as a non-profit in 2005
with a donation from a cancer patient.

Our mission is to provide Access, Knowledge & Support
to all those affected by cancer in Maui Nui

Nancy La Joy, Executive Director 808-242-7661 www.pacificcancerfoundation.org


1

PCF SERVICES

- Patient Navigation**
 - 2 patient navigators and a community health worker
- Nutritional Support**
 - Registered dietician
- Support Group**
 - Facilitated by a licensed therapist
 - Patients & Survivors, Caregivers, Men and Children with a parent in treatment
- Survivorship**
 - Sanford-based, 6 week survivorship work
 - 24 workshops in 2019
 - Wellness Classes – Yoga, Meditation, Chi Gung
- Visiting Specialist Program**
 - 2 High Risk Breast Clinics and 1 Gynecologic Oncologist and staff each month

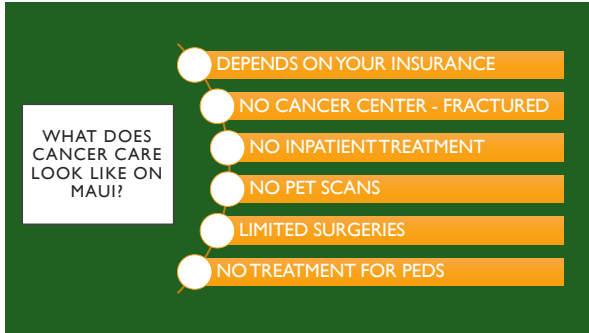
2

MAUI'S NAVIGATION TEAM

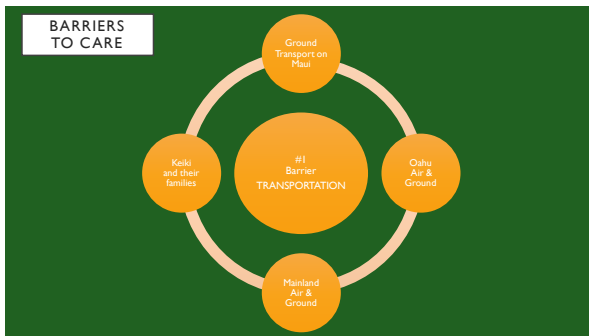


Shari	Chablis	Christina
Shari was in the first patient navigation class at UH Maui	Chablis is our care coordinator, Assistant to Navigators	• Co-Founder of the Guam Cancer Care Assistance Foundation
UH Maui partnered with Queens and 'Imi Hale to develop a patient navigation certification program	She started at PCF as an intern from UH Maui's Community Health Worker Program in 2016	• Speaks 3 languages
		• Oncology nurse since 2006. Currently acts as a lay navigator

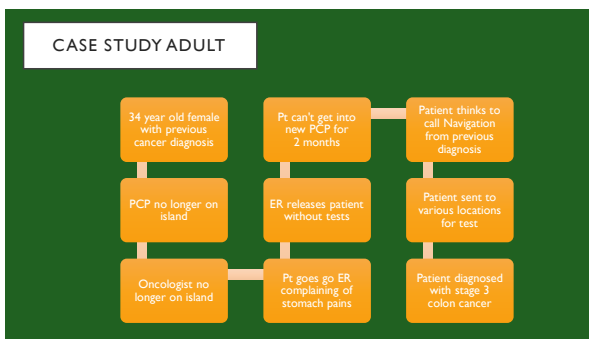
3



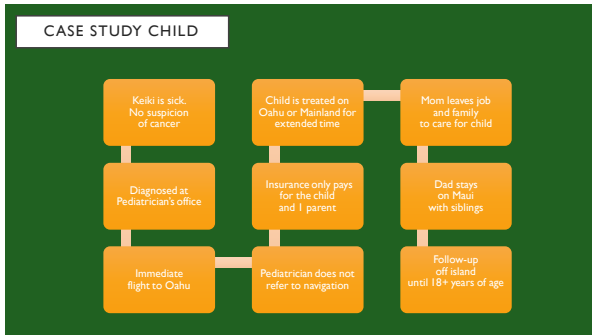
4



5



6



7

UNCERTAIN FUTURE FOR NAVIGATION ON MAUI

• In 2019 the Budget for PCF was \$782,000	• In 2020 our budget is based on 0 income
• Paddle for Life Event \$250,000	• Paddle for Life Event \$40,000
• Annual Gala \$250,000	• Annual Gala Donors \$52,750
• Grants \$155,000	• Grants \$75,000
• Beneficiary Events \$112,000	• Beneficiary Events \$8,000
• Individual Donations \$55,000	• Individual Donations \$23,600

• September 1st our administrative team was furloughed. Our hospital team all had hours cut.

• Currently our 2 navigators are working 30 hours/wk and our care coordinator is working 15 hours/wk.

8

QUESTIONS ?

9
